

CorporateTechnologyGroup



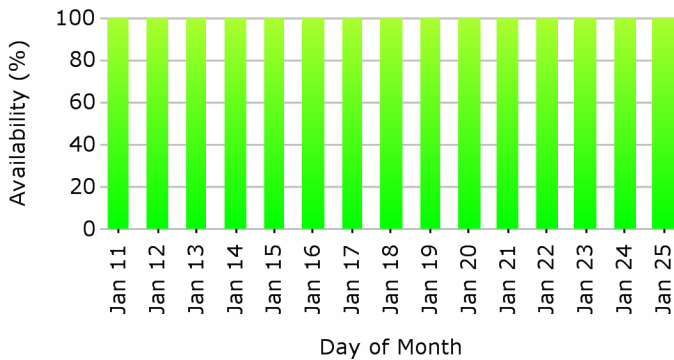
Windows Server Health

1/11/2008 10:10:00 AM - 1/25/2008 10:10:00 AM

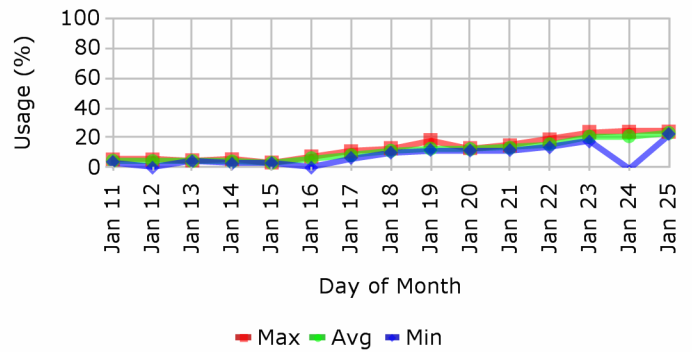
Device Name:	antec3	Operating System:	Microsoft Windows XP Professional
Manufacturer:	To Be Filled By O.E.M.	Domain Role:	Standalone Workstation
Model:	To Be Filled By O.E.M.	OS Version:	5.1.2600
Memory:	1023MB	Service Pack:	2.0
CPU:	Intel(R) Pentium(R) 4 CPU 3.00GHz; Intel(R) Pentium(R) 4 CPU 3.00GHz;	IP Address(es):	10.0.0.98;
Period:	1/11/2008 10:10:00 AM - 1/25/2008 10:10:00 AM	Disk Capacity:	C: 40312 MB; E: 20482 MB; F: 15516 MB;
Created On:	1/25/2008 10:11:27 AM		

Performance

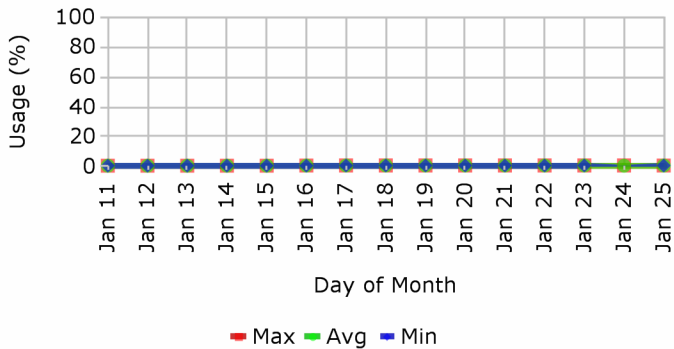
Server Availability:



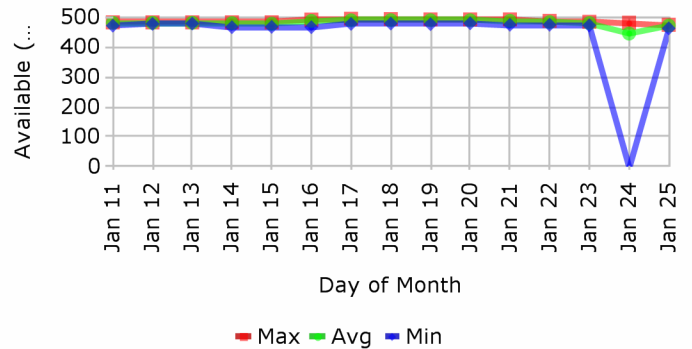
CPU Usage:



Page File Usage:



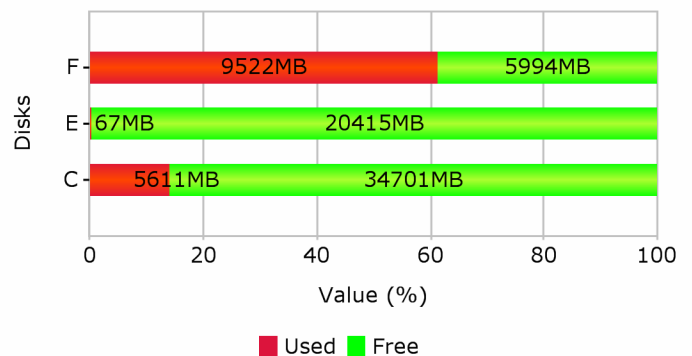
Memory Usage:



Network Service Availability:

No data available.

Disk Utilization:



Patch Status

Patch Summary:

No data available.

Monitoring and Alerts

Top 5 Windows Events (Errors and Warnings):

No data available.

Alerts:

No data available.